



2018 BSRA Competition Season

- **Indoor Rowing Championships**
- **Regattas at Wyaralong Dam**

Competitor Information

Table of Contents

Brisbane Schoolgirls' Rowing Association Mission Statement	4
2018 Calendar	4
Indoor Rowing Championships	5
Regatta Information for Competitors	7
Race Schedule for lead up regattas	7
Head of the River Race Schedule TBC.....	9
Eligibility	11
Safety and Training	11
Safety and Racing.....	11
Regatta Officials.....	12
The Regatta Committee.....	12
Racing procedures	12
Guidelines 1 – 9 are adapted from the Rowing Queensland Racing Rules and Etiquette (2014)....	13
1. BEFORE BOATING FOR A RACE	13
2. MOVING YOUR BOAT FROM THE SCHOOL ZONE TO THE WATER.....	13
3. IN THE TRANSIT LANE.....	13
4. IN THE MARSHALLING ZONE	13
OBSERVE THE STARTER	14
MOVING FROM THE MARHALL ZONE TO THE START	14
5. FLAGS and BELLS	15
6. STARTERS INSTRUCTIONS	15
COUNTDOWN	15
THE START:.....	15
QUICK START:.....	15
HELD START (for the 8+'s races only)	15
REASONS FOR RACE STOPPAGES	16
7. THE RACE TO THE FINISH LINE	16
UMPIRES SIGNALS.....	17
AT THE FINISH LINE	17
8. REMOVING THE BOAT FROM THE WATER.....	17
9. SAFE AND FAIR CHECKLIST.....	18
BSRA Official/ participant/ parent behaviour protocol	19
BSRA handling of Protests and Disputes	19
Parking at Regattas	20
Head of the River Trophies.....	21
The BSRA Cup.....	21
The Aggregate Trophy	21
The Percentage Trophy.....	21

Appendix A.....	22
Aerial photographs and maps of Wyaralong	22
Appendix B	27
School Competitor Tent location	27
Spectator Tent Location.....	27
Appendix C.....	28
Catering rotation for Head of the River among member schools	28
Appendix D.....	29
Executive Role Rotation among BSRA Member Schools	29
Appendix E	30
FAQ'S for Wyaralong 2018.....	30

Brisbane Schoolgirls' Rowing Association Mission Statement

The Brisbane Schoolgirls' Rowing Association (BSRA) provides a competitive rowing experience in a structured and supportive environment that reflects the values of its ten member schools. We conduct a quality, competitive and team orientated rowing regatta program where students and coaches interact to encourage physical, emotional, ethical and social development within the association and the wider sporting community. We aim for our rowing competition to be fun for all and to foster social connection and inclusion that emanates from opportunities in sport.

2018 Calendar

2018 Events	Date	Venue
CityCat safety interaction	Individual School request	Terminal closest to school rowing facility
Indoor Rowing Championships	Tuesday 22 May, 5-8:30pm	Somerville House
Stuartholme Friendly	TBA	Brisbane River Toowong
Rowing Captains Dinner	Wednesday 18 July	AHS
BSRA Regatta's and Hosts		
BGGs & Stuartholme	Saturday 28 July - 8am – 1pm	Wyaralong Dam
St Aidan's & St Margaret's	Saturday 4 August – 8am – 1pm	Wyaralong Dam
St Hilda's & Lourdes Hill	Saturday 11 August – 8am – 1pm	Wyaralong Dam
All Hallows & Somerville	Saturday 18 August – 8am – 1pm	Wyaralong Dam
St Peters & BSHS	Saturday 25 August – 8am – 1pm	Wyaralong Dam
Head of the River – BSHS	Saturday 1 September – 8am – 1pm	Wyaralong Dam

Indoor Rowing Championships

Conducted on Tuesday 22 May 2018 at Somerville House commencing at 5pm.

Record holders are found here:

<http://www.bsra.org.au/index.php/results/indoor-rowing-record-holders/>

The entries, in order of event, are as follows:

Year 8 Individual – 500 m

Year 9 Individual - 1000m

Year 10 Individual – 1000m

Year 11 Individual – 2000m

Year 12 Individual – 2000m

Year 8 Relay – 1000m (5 x 200m each)

Year 9 Relay – 2500m (5 x 500m each)

Year 10 Relay – 2500m (5 x 500m each)

Year 11 Relay – 2500m (5 x 500m each)

Year 12 Relay – 2500m (5 x 500m each)

All Age Relay – 2000m (10 x 200m each)****

**** 2 competitors from each year level and commencing with Year 8 up to Year 12.

Other things to know:

- Spectators are welcome
- Programs are online at www.bsra.org.au and there are some hard copies available
- Food and drinks are available for purchase.
- Your school will provide a warm up ergo and the location will be made clear on the day
- Warm up is recommended
- Marshalling will take place ten minutes prior to your race
- When you enter stage, you can set your feet on the ergo but **do not** pull the wheel until the racing commences
- The racing will commence immediately by a digital voice numbering down from 5, 4, 3, 2, 1 GO
- A screen with simulated boats will be displayed that indicates your position in the race
- A supervisor is located behind each ergo

- You are permitted one supporter (coxswain) to accompany you on stage in the Individual event
- At the conclusion of racing, all athletes will exit stage opposite the side they entered: first second and third place athletes will remain for the awards on the side of the stage
- Awards will be presented immediately

Regatta Information for Competitors

2018 BSRA Regatta season is conducted at Wyaralong. See the link to the website below for directions.

<http://www.bsra.org.au/index.php/rowing-queensland/>

Race Schedule for lead up regattas

Please note that each division races a final twice (except for the single sculls). The first race is for **seeding and pennants** and the second race is for seeding only. The seeding determines lane allocation in the HoR. Refer to the website www.bsra.org.au for up to date information here.

The table below outlines the racing schedule for the first lead up regatta. Subsequent regattas will be scheduled following the feedback of the first regatta. The numbers of divisions for each Year level is a guesstimate prior to confirmation of boat numbers by each school at season commencement.

2018 Schedule for the lead up regatta's				
Race Alpha	Race #	Race Time	Race Division	Race Distance (m)
A	1	8:00	Year 12 Single Scull	1000
B	2	8:05	Year 9 Single Scull	1000
C	3	8:10	Year 8 Quad Division 8	1000
D	4	8:15	Year 8 Quad Division 7	1000
E	5	8:20	Year 8 Quad Division 6	1000
F	6	8:25	Year 8 Quad Division 5	1000
G	7	8:30	Year 8 Quad Division 4	1000
H	8	8:35	Year 8 Quad Division 3	1000
I	9	8:40	Year 8 Quad Division 2	1000
J	10	8:45	Year 8 Quad Division 1	1000
K	11	8:50	Year 10 Single Scull	1000
L	12	8:55	Year 11 Single Scull	1000
M	13	9:00	Year 9 Quad Division 7	1000
N	14	9:05	Year 9 Quad Division 6	1000
O	15	9:10	Year 9 Quad Division 5	1000
P	16	9:15	Year 9 Quad Division 4	1000
Q	17	9:20	Year 9 Quad Division 3	1000
R	18	9:25	Year 9 Quad Division 2	1000
S	19	9:30	Year 9 Quad Division 1	1000
T	20	9:35	Year 8 Single Scull	1000
U	21	9:40	Senior Coxed Eight Division 3	2000
V	22	9:45	Senior Coxed Eight Division 2	2000
W	23	9:50	Open Coxed Eight	2000
X	24	10:00	Year 10 Quad Division 4	1500

BSRA WEBSITE Competitor Handbook 2018

Y	25	10:05	Year 10 Quad Division 3	1500
Z	26	10:10	Year 10 Quad Division 2	1500
A	27	10:15	Year 10 Quad Division 1	1500
B	28	10:20	Senior Coxed Four	1500
C	29	10:30	Year 8 Quad Division 8	1000
D	30	10:35	Year 8 Quad Division 7	1000
E	31	10:40	Year 8 Quad Division 6	1000
F	32	10:45	Year 8 Quad Division 5	1000
G	33	10:50	Year 8 Quad Division 4	1000
H	34	10:55	Year 8 Quad Division 3	1000
I	35	11:00	Year 8 Quad Division 2	1000
J	36	11:05	Year 8 Quad Division 1	1000
		11:10	BREAK	
		11:15		
K	37	11:20	Year 9 Quad Division 7	1000
L	38	11:25	Year 9 Quad Division 6	1000
M	39	11:30	Year 9 Quad Division 5	1000
N	40	11:35	Year 9 Quad Division 4	1000
O	41	11:40	Year 9 Quad Division 3	1000
P	42	11:45	Year 9 Quad Division 2	1000
Q	43	11:50	Year 9 Quad Division 1	1000
R	44	11:55	Senior Coxed Eight Division 3	2000
S	45	12:00	Senior Coxed Eight Division 2	2000
T	46	12:05	Open Coxed Eight	2000
U	47	12:15	Year 10 Quad Division 4	1500
V	48	12:20	Year 10 Quad Division 3	1500
W	49	12:25	Year 10 Quad Division 2	1500
X	50	12:30	Year 10 Quad Division 1	1500
Y	51	12:35	Senior Coxed Four	1500

Head of the River Race Schedule TBC.

Proposed 2018 Head of the River schedule		
	Rolling presentations throughout up to the OPEN 8+	
9:00	Year 12 Single Scull	1000
	Presentation of Year 12 single Scull	
9:05	Year 9 Single Scull	1000
	Presentation of Year 9 Single Scull	
9:15	Year 8 Quad Division 8	1000
9:20	Year 8 Quad Division 7	1000
9:25	Year 8 Quad Division 6	1000
9:30	Year 8 Quad Division 5	1000
9:35	Year 8 Quad Division 4	1000
9:40	Year 8 Quad Division 3	1000
9:45	Year 8 Quad Division 2	1000
9:50	Year 8 Quad Division 1	1000
	Rolling presentation of Year 8 Quads	
10:00	Year 11 Single Scull	1000
	Presentation of Year 11 Single Scull	
10:10	Year 10 Single Scull	1000
	Presentation of Year 10 Single Scull	
	25 -minute Morning Tea Break - change over for volunteer drivers	
10:40	Year 9 Quad Division 7	1000
10:45	Year 9 Quad Division 6	1000
10:50	Year 9 Quad Division 5	1000
10:55	Year 9 Quad Division 4	1000
11:00	Year 9 Quad Division 3	1000
11:10	Year 9 Quad Division 2	1000
11:15	Year 9 Quad Division 1	1000
	Rolling Presentation of Year 9 Quads	
11:30	Year 8 Single Scull	1000
	Presentation of Year 8 Single Scull	
11:45	Year 10 Quad Division 5 (presently only have 1 Div 5 crew STM)	1500
11:50	Year 10 Quad Division 4	1500
11:55	Year 10 Quad Division 3	1500

12:00	Year 10 Quad Division 2	1500
12:05	Year 10 Quad Division 1	1500
12:10	Senior Coxed Four	1500
	Rolling presentation of Year 10 Quad and Senior 4	
12:20	Senior Coxed Eight Division 3	2000
	Presentation of Senior Coxed Eight Div 3	
12:30	Senior Coxed Eight Division 2	2000
	Presentation of Senior Coxed Eight Div 2	
12:40	OPEN Eight	2000
12:45	PRESENTATIONS for year level champions (8,9,10), Percentage Cup and 1st 8+ Aggregate Trophy	

Eligibility

Refer to [BSRA By Laws Document](#)

The BSRA website has comprehensive information www.bsra.org.au

Safety and Training

The BSRA are committed to ensuring that safety practices are 'best practice' within our member schools. The BSRA is subject to the authority of Rowing Queensland, Transdev and in turn the Maritime Authority to ensure that our behaviours on the water reflect all guidelines.

The BSRA has several steps to encourage safety awareness amongst its members:

1. An online BSRA Safety Quiz identifies the critical elements to consider on our river and waterways and within our sport. [BSRA Safety Quiz](#)
2. A PowerPoint presentation is available to **coaches** to enhance the schools' own safety initiatives. There is a link to access this on the website.
3. The link below is a video created by the Queensland Government in partnership with the Maritime Authority and Rowing Queensland, it is the primary information shared with the BSRA members as they begin their rowing season.

[Brisbane RiverShare – 'Because we're all in the same boat.' on Vimeo](#)

4. A Safety Audit is conducted with each BSRA member school's shed and operational procedures to ensure compliance. Each member school's coordinator has access via the website.
5. CityCat interactions are scheduled for Rowers, coxes and coaches for the 7 member schools that are located in CityCat operation areas.
6. Boat Race Officials will visit each school to talk through racing procedures. This is organised and paid for by each school independently. Please contact the BSRA EO if you have any queries. The contact details are available below in the next section.
7. The Risk Assessment in Appendix B identifies the risk relevant to rowing. It is a shared resource for the BSRA community.

Safety and Racing

Each BSRA member school is encouraged to have a Boat Race Official visit their school prior to the racing season. This interaction is aimed to inform them of racing procedures and encourage questions to fill gaps in knowledge and to compliment the schools own racing preparation procedures. To book this interaction, please call Rowing Queensland on 07 3842 1200 and schedule an appropriate time. The cost is approximately \$70.00.

See Appendix A for Wyaralong traffic rules maps

Regatta Officials

The Regatta Committee

Is defined as:

1. The Executive Officer (BSRA),
2. The Regatta Secretary (RQ)
3. Regatta Referee (RQ)

The Regatta Committee is responsible for the orderly conduct of the regattas, for applying the BSRA By-Laws, and the decisions of the Principals, meeting as the Board of Directors

The BSRA Regatta Committee will be responsible for all aspects of the running of the BSRA regattas. Rowing Queensland Boat Race Officials or Boat Race Officials (BRO's) appointed by the Regatta Committee shall be responsible for the on-water conduct of racing except where the BSRA By-laws may state otherwise.

The Rowing Queensland Laws of Boat Racing shall be adopted in full except where not applicable or where BSRA By-laws indicate otherwise. The BSRA shall decide on the appropriateness of Rowing Queensland Laws of Boat Racing.

All boats shall have a BSRA approved lane number affixed to the bow. These numbers will correspond with the lane drawn by that crew/sculler in the official draw.

Racing procedures

The maps in Appendix A indicate the course on Lake Wyaralong and the traffic flow that competitors follow.

Terminology to know:

- **Transit Lane** – the lane (course) you take to the start line
- **Traffic** – referring to boats and the direction they take on the course
- **The course** - the 10-lane buoyed racing area
- **No go area** – this is the area close to the Dam wall. For safety reasons, rowing in this area is not permitted
- **Course numbering** – lane ten is the closest to the transit lane.
- **Tail wind** – wind is in the direction you are moving
- **Head wind** – wind is against the direction you are moving

Guidelines 1 – 9 are adapted from the Rowing Queensland Racing Rules and Etiquette (2014)...

1. BEFORE BOATING FOR A RACE

- Check program to establish race time and lane number
- Obtain bow number and attach to the bow of your boat
- Ensure your boat is rigged and ready for time of your race
- Advise regatta officials, **as early as possible**, if you are withdrawing, changing your crew or encountering difficulties which may delay your arrival at the start
- Check weather conditions, e.g. wind direction
- Ensure crew members are aware of the scheduled time for boating and present on time
- Plan to leave boating area with time to ensure you are at starting area at least 5 minutes before scheduled start time of your race ALWAYS assume your race will start on time unless an announcement is made by regatta officials (not your club or school officials)
- Establish where the transit lane is to use on the way to the start

2. MOVING YOUR BOAT FROM THE SCHOOL ZONE TO THE WATER

- Arrange your oars on the bank before placing your boat in the water
- Leave the boating area as soon as possible (This minimises the time you need to use the boating area and avoids congestion)

3. IN THE TRANSIT LANE

Keep moving in the Transit lane

STOP When a race is going past on the course within 100m When a race is within 250m of the start or finish – DO NOT ROW IN EITHER DIRECTION ACROSS THE START OR FINISH LINE WHEN A RACE IS IN PROGRESS

Travel to the start/marshalling area as quickly as possible,

YEAR 8, 9 and Single Scull Marshalling area will be after the 1000m marker.

YEAR 10 and Senior 4+ Marshalling area will be after the 1500m marker. OPEN and Senior 8+'S Marshalling area will be 250 metres past the *start line*. DO NOT go beyond the sight of the start marshal in your warm up.

The BSRA regattas requires line of sight supervision.

4. IN THE MARSHALLING ZONE

When in the transit lane to the start line, DO NOT STOP at the start line.

Row past the start line to the designated marshalling area explained above.

Wind

1. If there is a following (tail) wind in the direction of the race, stop the boat approximately - 150m past the start
2. If there is a head wind in the direction of the race, stop the boat approximately 100m past the start
3. Wait for instructions from the regatta officials

Look for other boats with the same alpha bow number try and group together
DO NOT TURN YOUR BOAT AROUND UNTIL INSTRUCTED BY THE REGATTA OFFICIALS

If you are not in the starting area 5 minutes before the start of your race, you may be issued a yellow card (false start)

Check all gear in the boat, especially gates, to ensure they are tight

Maintain *your position* in the marshalling zone
RESPOND AND OBEY PROMPTLY BRO's signals and instructions

Marshalls will try and position you in correct order behind your lane
Strokes should observe umpires (you can see them) and help by relaying the umpire's instructions to coxswains

OBSERVE THE STARTER

To learn his/her technique. Each starter has their own idiosyncratic behaviours. Learn them.

MOVING FROM THE MARSHALL ZONE TO THE START

Listen carefully and respond immediately to the instructions from the regatta officials
You must respond immediately to the starter's instructions or risk being disadvantaged

The Starter will:

- Call you onto the course in lane order: 10, 9, 8, 7, 6, 5, 4, 3, 2, 1
- Aim to bring all crews up to the start line together

Coxswains must:

- Have their boats straight
- Be in their correct lane before reaching the start line
- Indicate you have heard the official by raising your hand and then drop it immediately after
- Ensure their boat is ready to start.
- Both coxswains and bow seat raise hands if you have a problem. This makes it easier for the starter to see
- Keep trying to fix the problem while your hands are raised
- The starter will not delay the start because a coxswain's hand is raised unnecessarily

Managing the Wind:

- Keep the bow of your boat pointed into the wind rather than away
- Crosswinds – Anticipate Drift i.e. from the - RIGHT remain to the right - LEFT remain to the left

Only touch when called to by the starter.

- Generally, touches should be bow pair only (in still or tail conditions) or full crew (in a headwind).
- To straighten your boat, back down on the relevant side

5. FLAGS and BELLS

Know what to do when a BRO uses a RED FLAG, WHITE FLAG, THE BELL (refer to Starters Instructions, Reasons for race stoppages and Umpire Instructions further down this document).

6. STARTERS INSTRUCTIONS

COUNTDOWN

Depending on conditions

Starter will announce time to the start

“Two minutes” all crews are now under starters orders - keep boat aligned

Lane Numbers announced

THE START:

1. Starter calls “ATTENTION” and the Red Flag is raised
2. Variable Pause
3. Red Flag dropped to the side simultaneously with “GO”

Be alert and ready for the Quick Start.

QUICK START:

1. Starter calls “Quick Start Attention”
2. Clear Pause but length of time is variable
3. Red Flag is dropped to the side simultaneously with “GO”

HELD START (for the 8+’s races only)

1. Enter your lane
2. Turn either before or after the so that you drift towards the pontoon rather than away pontoon depending on the wind
3. Connect with the boat holder ASAP
4. Racing tap to straighten boat – Pass the blades forward to the rower in front of you to tap so that there is no lateral movement
5. The pontoons may move so the starter may use backing to achieve a straight line
6. In very windy conditions the starter may count down to the starting instructions

REASONS FOR RACE STOPPAGES

If the bell is rung and a red flag is waved: **Stop Rowing**. You are in immediate danger
BROs will Wave the Red Flag and ring the Bell for when there is a **False start**.

Penalty Yellow Card.

Any crew that breaks the start will be issued a yellow card – 2 yellow cards will result in the crew being withdrawn from the race

Collision

When a major collision occurs, the race will be stopped and the crew causing the collision may be excluded from the race

Hazard

There is a **hazard** on the course ahead (for example, a capsized boat from the previous race blocking the course)

Breakage

NB. Previous BREAKAGE RULE NO LONGER APPLIES – races will not be stopped because a crew suffers a breakage within the first 100m

Coxswains ensure:

- A straight course is steered
- No other crew is interfered with

7. THE RACE TO THE FINISH LINE

MAINTAIN YOUR STARTING LANE. If you started in the incorrect lane, remain in that lane unless otherwise instructed by the umpire

PAY ATTENTION TO THE RACE UMPIRE AT ALL TIMES and respond immediately

OBEY INSTRUCTIONS PROMPTLY

Strokes help coxswain (you can see the umpire)

Umpires will:

- Follow you up the course during the race to ensure a SAFE and FAIR competition
- Direct you to change your course should you be heading for danger or a possible collision

UMPIRES SIGNALS

WHITE FLAG HELD CONTINUOUSLY OVERHEAD AND UMPIRE CALLS YOUR NAME

Response STOP IMMEDIATELY

WHITE FLAG MOVED TO THE SIDE AND CALLS YOUR NAME

Response Change course to side shown by position of Umpires Flag

RED FLAG HELD CONTINUOUSLY ABOVE HEAD AND BELL RUNG

Response Entire race to STOP IMMEDIATELY

AT THE FINISH LINE

DON'T STOP AT THE FINISH LINE – let the boat run on.

A crew has finished a race when the bow has crossed the finish line a little past the buoy line and in line with the BIG ORANGE BUOYS

A coxed boat crossing the finish line without the cox shall not be placed

Maintain your lane after the race is finished

Don't turn into another lane while you are slowing down.

If the wind is against you, row 100m past the finish line before turning so you do not blow back over the line

As soon as possible after the finish, return to the boating area being careful to avoid other crews on the course

8. REMOVING THE BOAT FROM THE WATER

Remove your boat and oars from the boating area ASAP to allow for other crews.

Stay off the course on the way to the start – do not impede races in progress - penalty yellow card

9. SAFE AND FAIR CHECKLIST

The crew and coxswain can:

- ☐ ☐ Transport their boat and equipment to and from the water safely
- ☐ ☐ Check the bow ball is securely fixed
- ☐ ☐ Fix the correct bow number securely in its holder
- ☐ ☐ Check foot stretchers are tight
- ☐ ☐ Secure heels to no greater than 7cm. We suggest quick release straps for your shoes are fitted as well

The crew and coxswain are:

- ☐ ☐ Aware of the prevailing weather conditions and of their possible effects on the start and during the race
- ☐ ☐ Capable of handling the weather conditions (Head/Tail/Cross Winds)

The crew and coxswain are familiar with:

- ☐ ☐ The RQ Course Map
- ☐ ☐ Key hazard points on the course (as indicated on the RQ Course Map)
- ☐ ☐ Local on-water traffic rules and flow
- ☐ ☐ Key landmarks on the course
- ☐ ☐ The location of the marshalling and start zone.

The crew and coxswains:

- ☐ ☐ Understand the Rules of Racing
- ☐ ☐ Are fully prepared to respond promptly to instructions from Boat Race Officials
- ☐ ☐ Are familiar with the start procedures for their start zone (1000/1500/2000m)

BSRA Official/ participant/ parent behaviour protocol

Everyone is required to deal respectfully with each other.

The Boat Race Officials (BRO) from Rowing Queensland are volunteers and commit a great deal of time and energy to BSRA racing. Please follow their directions.

If you have an altercation, the directions from one BRO to another are conflicting, or you are unsure of what they mean please talk/report to your school coordinator for clarification. The purpose of the regattas is to learn about the sport, about racing and about yourself.

BSRA handling of Protests and Disputes

At lead up regattas to the Head of the River Regatta, decisions regarding the cancellation of events or the adjudication of disputes or protests on the day will be made by all or any as are available of the Principals conjointly, or their nominees, of each of the schools hosting the regatta in consultation with the Regatta Referee and the BSRA Executive Officer. Rowing Coordinators may not serve as school nominees.

The responsibility of the Head of the River Committee shall include, but not be limited to:

- Adjudicating disputes and/or protests
 - Deciding the cancellation, postponement or other variations to the published program of events
 - Communicating decisions made to representatives of member schools
-
- Any crew wishing to protest a race should have one competitor raise her hand at the conclusion of the race and advise the umpire that a protest is to be lodged. This protest should then be submitted in writing to a member of the Regatta Committee by the rowing coordinator of the school lodging the protest. Under no circumstances should any other person become involved with the protest except by the express invitation of the Regatta Committee.
 - The Chair of the BSRA will also be consulted if necessary in the capacity as a member of the Head of River Committee. The Chair may appoint another Principal of a BSRA school as his/her nominee in the event of absence or illness. The nominee must be communicated to the other members of the Committee prior to the commencement of the Regatta.

Please note: Whilst it is important that the BSRA rules be followed it should be recognised that at times regattas are often run in difficult circumstances with the adverse effects of wind offering less than ideal circumstances. Coordinators should take this into account when considering whether or not to lodge a protest after a race.

Parking at Regattas

Athletes and Coaches are encouraged to travel with the school buses. Each school is given a few coaches vehicle passes. Distribution of these is up to your school coordinator.

BSRA vehicle passes give FREE PARKING but they DO NOT give you an allocated car park. Car parking (CP) is 'First come, first served'.

There is no VIP parking at Wyaralong.

Please see Appendix A maps where the location of parking is illustrated. CP2,3 and 4 are within walking distance of the headlands. CP5, 6 and 7 require a shuttle bus ride.

Athletes travelling by car with parents/carer/friends etc are required to park and make their way on foot to the competitor headland.

Rowing Queensland (RQ) have indicated that for the 2018 season there will be a drop off area constructed at the entrance to the competitor headland. Information will be updated accordingly.

Parking for the Head of the River on Saturday 1 September 2018 will be confirmed closer to the date.

Belbaker are operating the shuttle bus service.

Head of the River Trophies

There are three trophies presented at the Head of the River:
The BSRA Cup, the Aggregate Trophy and the Percentage Cup.

The BSRA Cup

Donated by the Grummitt Family. This trophy is awarded to the school that wins the 1st VIII race.

The Aggregate Trophy

This trophy is awarded to the school gaining the highest number of points at the Head of the River regatta. (See By-Laws number 38).

The point score system detailed below has been implemented to ensure that each competitor, including coxswains, has a fair and equal opportunity of contributing to her school's total.

All Open events and Divisions 1 to 4 of Years 8 – 10 will count towards the aggregate total.

Each placing is given points according to their finishing position at the Head of the River regatta as follows:

The crew that finishes first will be allocated ten (10) points, second nine (9) points and so on

This placing is then factored by the number of rowers in the crew. e.g. an VIII would receive $10 \times 9 = 90$ points for first position and likewise, a Quad finishing third would receive $8 \times 5 = 40$ points.

This system is designed to provide each girl who competes with an equal contribution to her school's result irrespective of boat class.

No race shall have a preference and all races shall have the same number of points allocated to them.

The Percentage Trophy

This is awarded to the school gaining the highest percentage as calculated by dividing each school's Aggregate points score by the female population from grades 8 through 12 inclusive from that school.

The school that wins the aggregate trophy in any year shall be excluded from the calculation of the Percentage trophy.

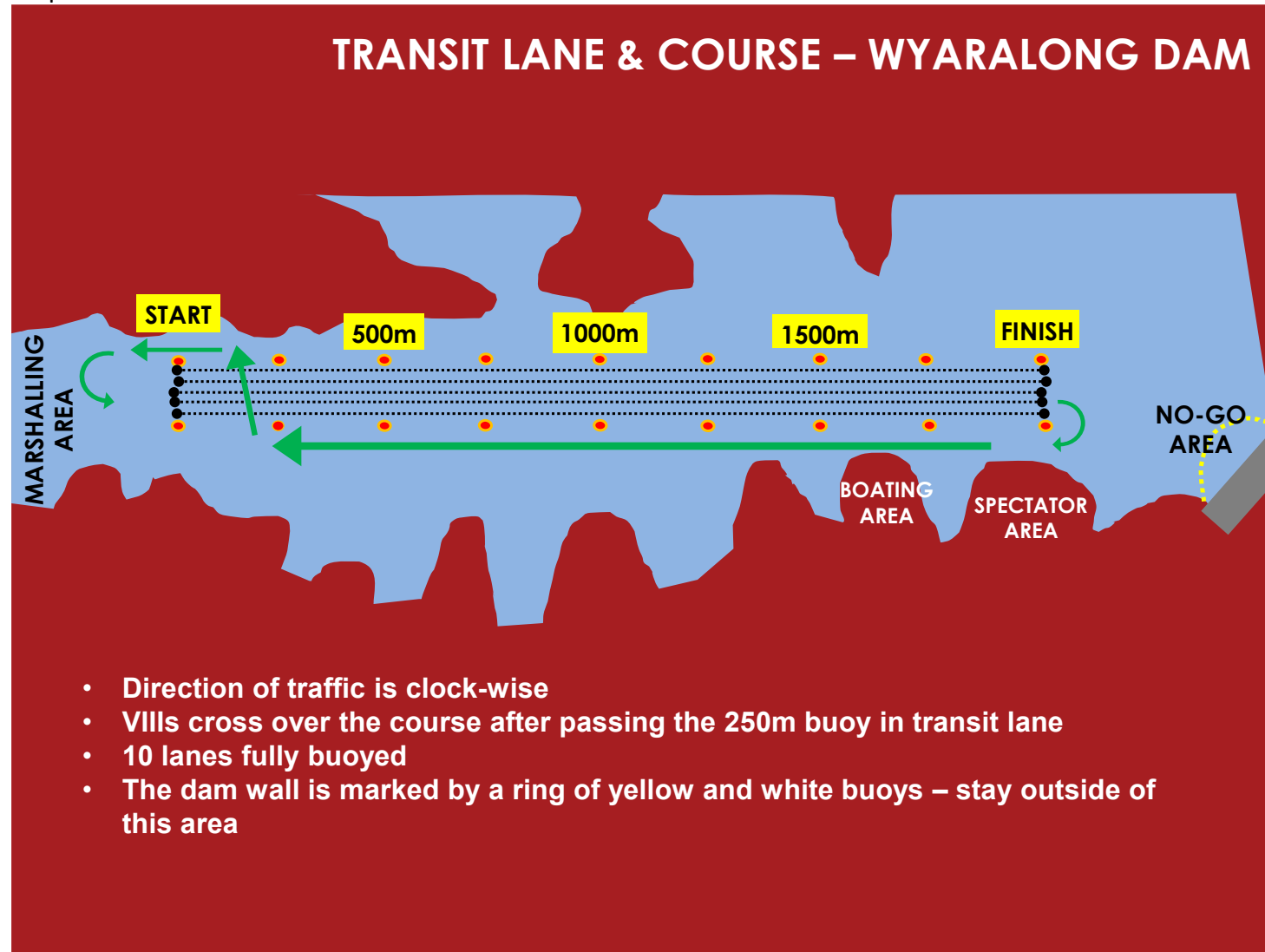
Appendix A

Aerial photographs and maps of Wyaralong

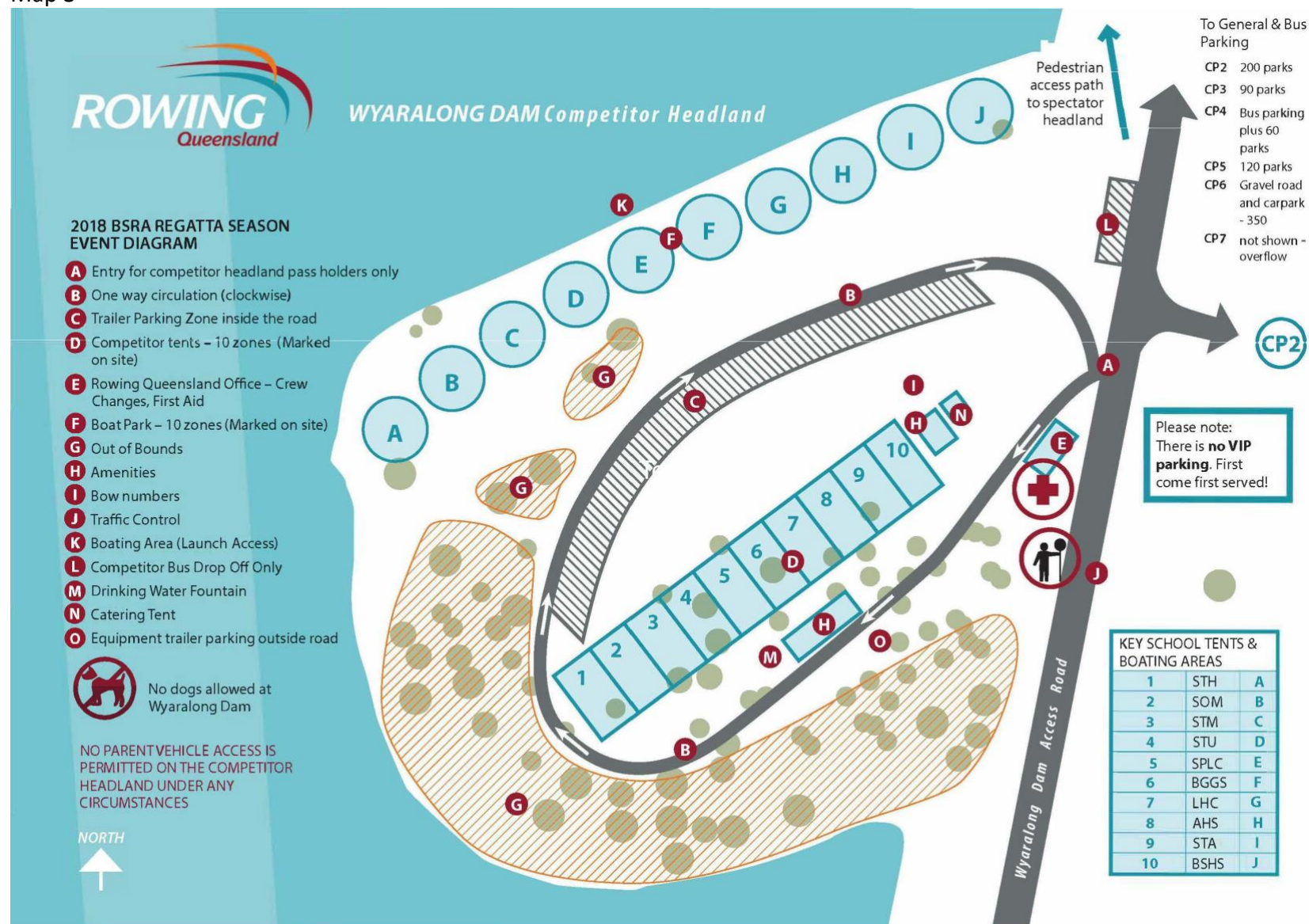
Map 1



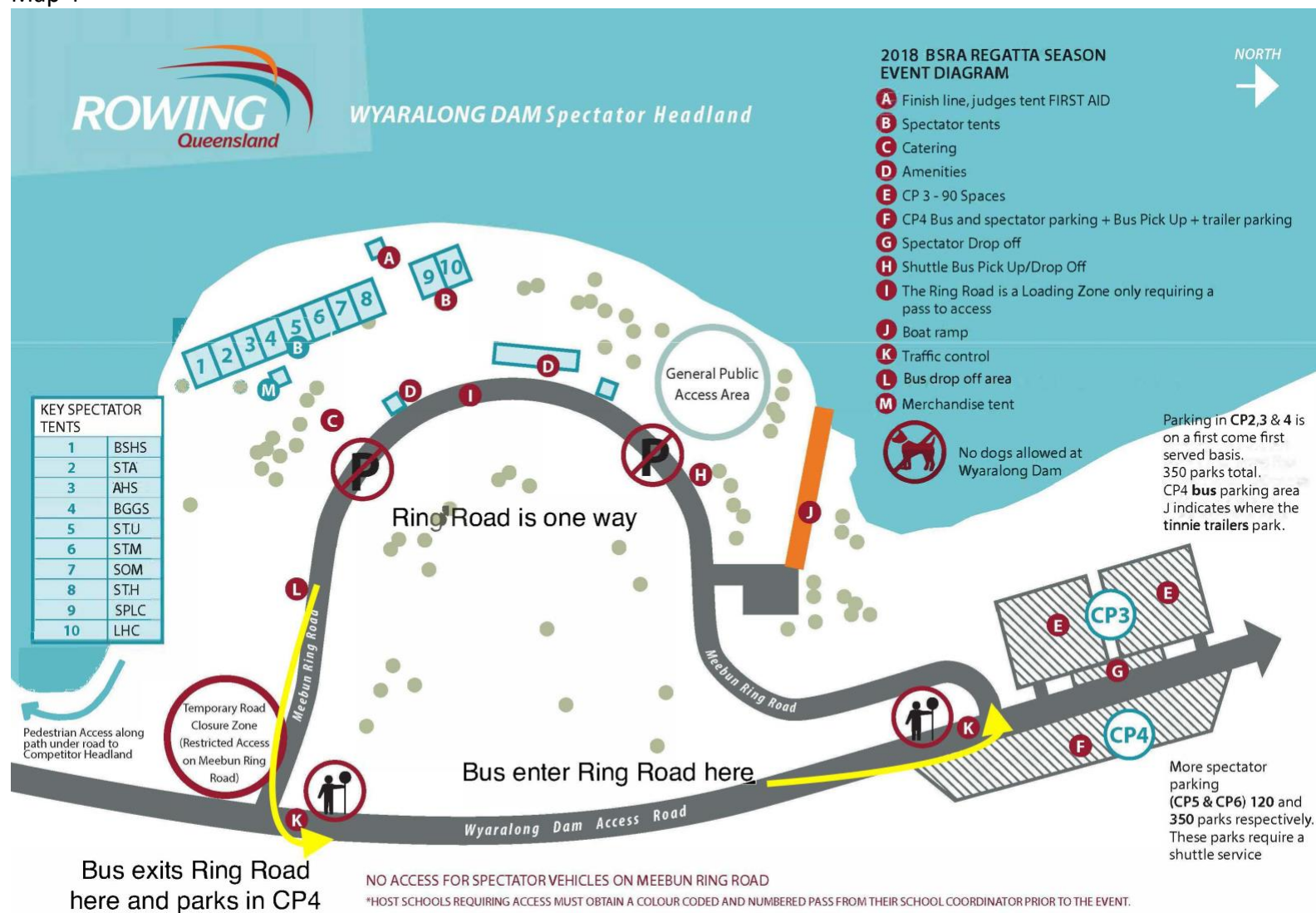
Map 2



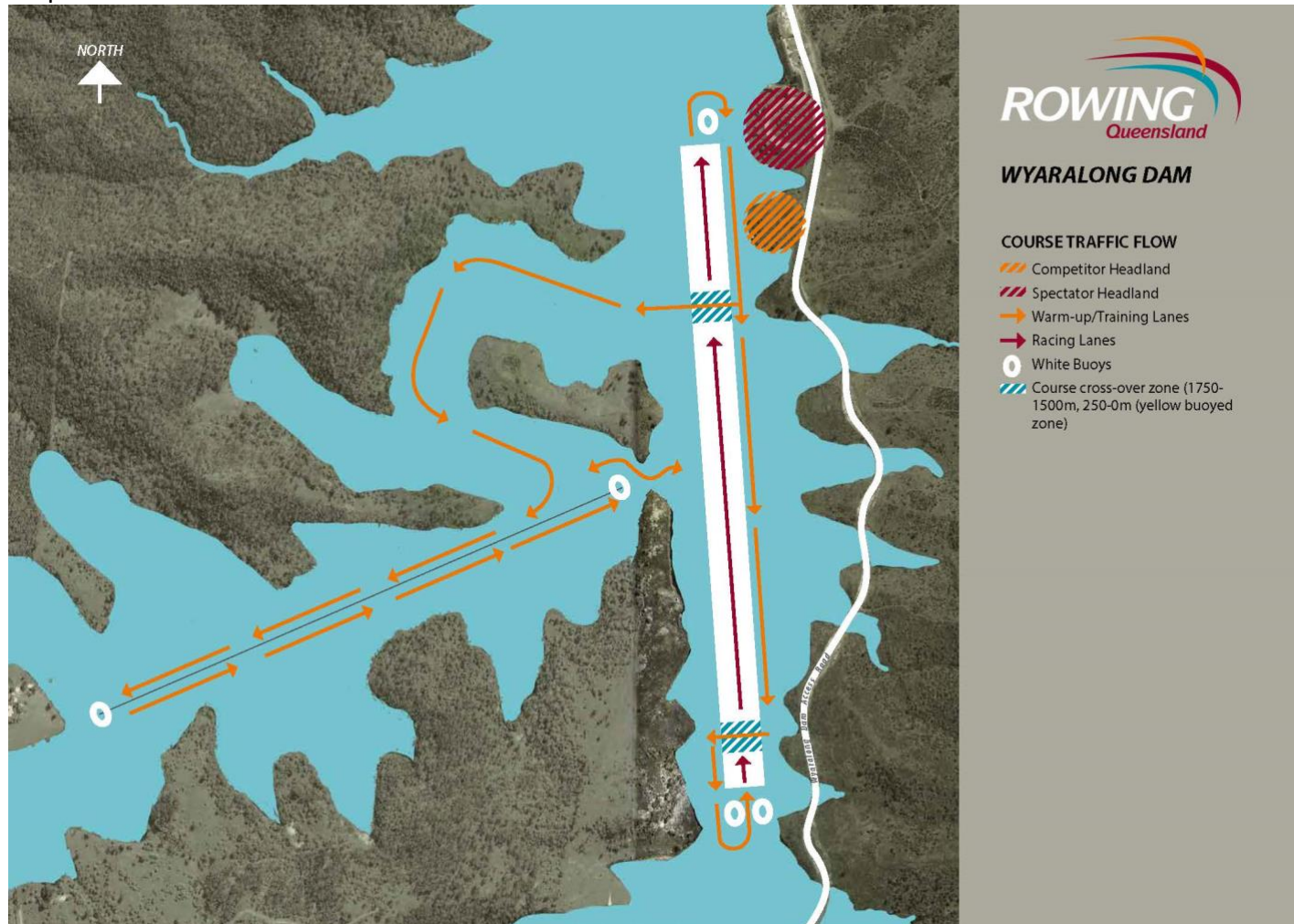
Map 3



Map 4



Map 5



N.B. During BSRA regattas the crews are required to remain on the course. This map is displayed here because the BSRA is aware that many schools train on Wyaralong at other times and they need to be advised of the traffic rules on these occasions.

Appendix B

School Competitor Tent location

Competitor tent locations are based on HoR OPEN 8+ Results from the previous year
Schools in order of 2017 OPEN 8+ event.

2017 OPEN VIII+ RESULT

STH	SOM	STM	STU	SPLC	BGGS	LHC	AHS	STA	BSHS**
1	2	3	4	5	6	7	8	9	10

**In 2017 BSHS did not race an Open VIII

See Appendix A, Map 3 for the actual site illustration.

Spectator Tent Location

At Wyaralong, a preferred position for spectators is no longer relevant. All the sites for the spectators have their own advantages. Feedback from the schools was that they all like their location in 2017. The small alterations to the sites I have made for 2018 reflect the size of the rowing program and relative spectator numbers so that the geographic area is maximised. See Appendix A Map 4 for the site allocation.

Delivery and collection of spectator tents to and from the spectator headland is logistically managed so that the traffic flow and bus operations are not hindered. Please talk to your coordinator for a vehicle pass to the spectator headland. The instructions are printed on this vehicle pass.

Appendix C

Catering rotation for Head of the River among member schools

HOR Catering: The order from the draw conducted by Principals in 2015.

2015: St Hilda's School

2016: Lourdes Hill College

2017: Somerville House

2018: BSHS

2019: BGGS

2020: All Hallows

Appendix D

Executive Role Rotation among BSRA Member Schools (confirmed AGM 2017)

Schools	2012	2013/14	2015/16	2017/18	2019/20	2021/22	2023/24	2025/26	2027/28
AHS				Treasurer/Chair	Immediate Past Chair				
BGGS			Treasurer			Chair	Immediate Past Chair		
BSHS				2018 Treasurer			Chair	Immediate Past Chair	
LHC					Treasurer			Chair	Immediate Past Chair
STA	Immediate Past Chair					Treasurer			Chair
STH	Chair	Immediate Past Chair					Treasurer		
STM		Chair	Immediate Past Chair					Treasurer	
SPLC			Chair	2017 Immediate Past Chair					Treasurer
SOM	Treasurer			2018 Immediate Past Chair					
STU		Treasurer			Chair	Immediate Past Chair			

Appendix E

FAQ'S for Wyaralong 2018

I understand Wyaralong has no mains water. What provision is available?

Drinking water at the competitor headland is a mobile water truck.

Bottled water is for sale on the spectator headland.

Tank water for washing up etc on spectator headland (RQ will give you keys to the tank water).

Is there food available for purchase on both headlands?

Yes, and boarders' vouchers are redeemable also.

Are there two roads that can be used to access Wyaralong?

No, so be warned, entry and exit can be congested.

If I do not travel with my school where is the drop off?

The BSRA would prefer that you remain in the car until parked and access the competitor headland via the walking path cut under the road that connects the spectator headland with the competitor headland. RQ have indicated that some roadworks will be completed prior to the BSRA season commencement. There will be a drop off area so that the safety risk of a roadside drop-off is eliminated. This is yet to be confirmed.

Who does the merchandise? How do I purchase?

The school that is the current Chair of the BSRA is allocated the merchandise. In 2018, it is AHS. 2019 it goes to Stuartholme. Purchasing will be available at each regatta and online at the BSRA website in due course.

What time does the gate open and close at Wyaralong?

It opens at 5:30am and closes at sunset.

Why does the competitor headland close at 7am until 8:30am to vehicles?

Because we have the highest amount of foot traffic at this time and we are limiting the interaction for safety.

When can boats arrive for weekly regattas and Head of River?

Anytime – security is your own

Thank you and enjoy the 2018 season. If you have any questions please email me:

Rachael Kininmonth rachael@bsra.org.au