



## WYARALONG DAM Competitor Headland

### 2023 BSRA REGATTA SEASON EVENT DIAGRAM

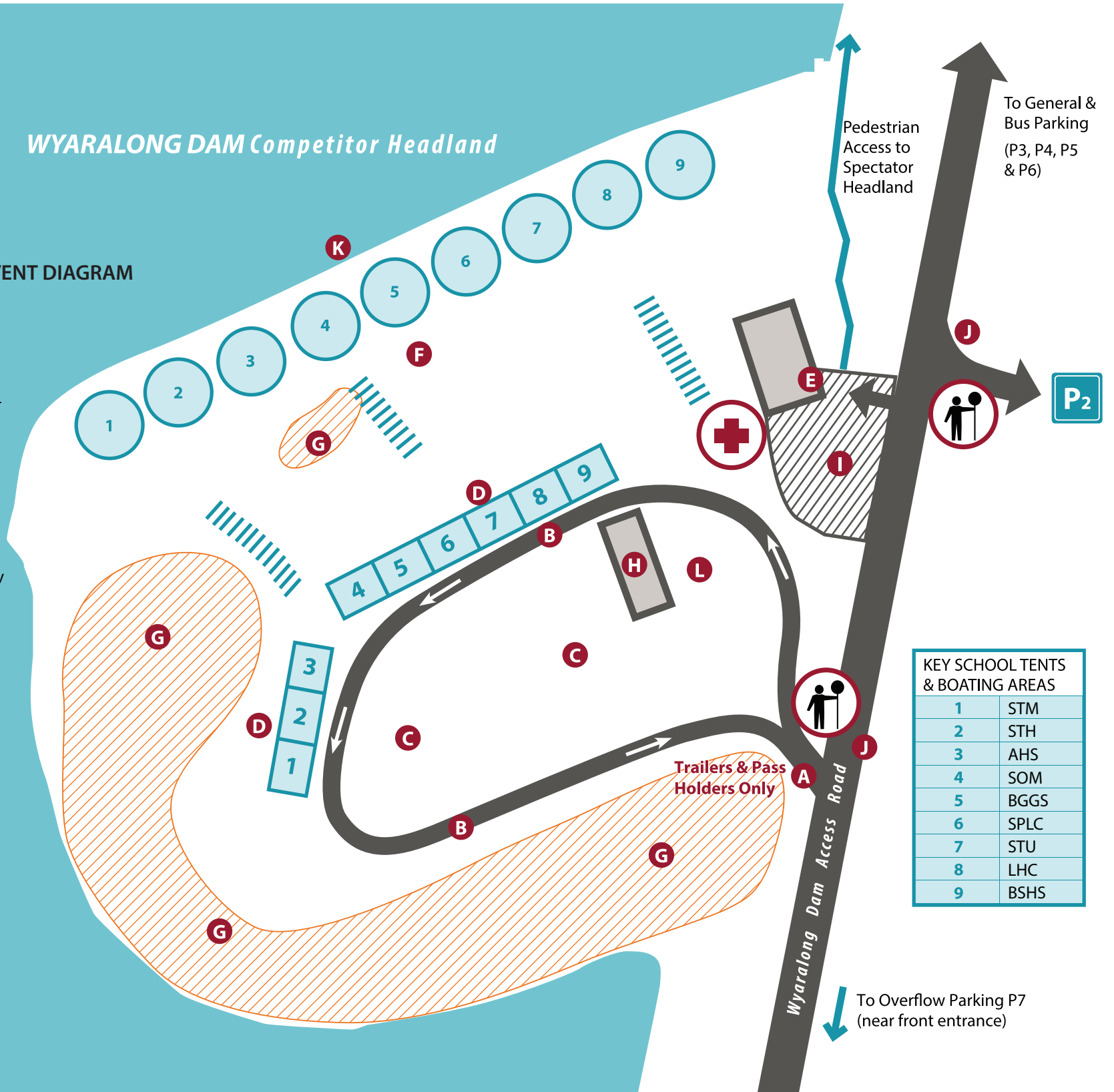
- A** Entry (Restricted Access Only)
- B** One way circulation (anti clockwise)
- C** Trailer Parking Zone
- D** Competitor tents & logistics trailers – 9 zones (Marked on site)
- E** Rowing Queensland Office - First Aid and Bow numbers
- F** Boat Park – 9 zones (Marked on site)
- G** Out of Bounds
- H** Amenities (Toilets & Water station)
- I** Officials and Emergency parking only
- J** Traffic Control
- K** Boating Area (Launch Access)
- L** Catering & Host School parking
- +** First Aid



No dogs allowed at Wyaralong Dam

**ABSOLUTELY NO PARENTS' VEHICLES ALLOWED ON THE COMPETITOR HEADLAND UNDER ANY CIRCUMSTANCES**

NORTH



KEY SCHOOL TENTS & BOATING AREAS	
1	STM
2	STH
3	AHS
4	SOM
5	BGGS
6	SPLC
7	STU
8	LHC
9	BSHS