



WYARALONG DAM Competitor Headland

2022 BSRA REGATTA SEASON EVENT DIAGRAM

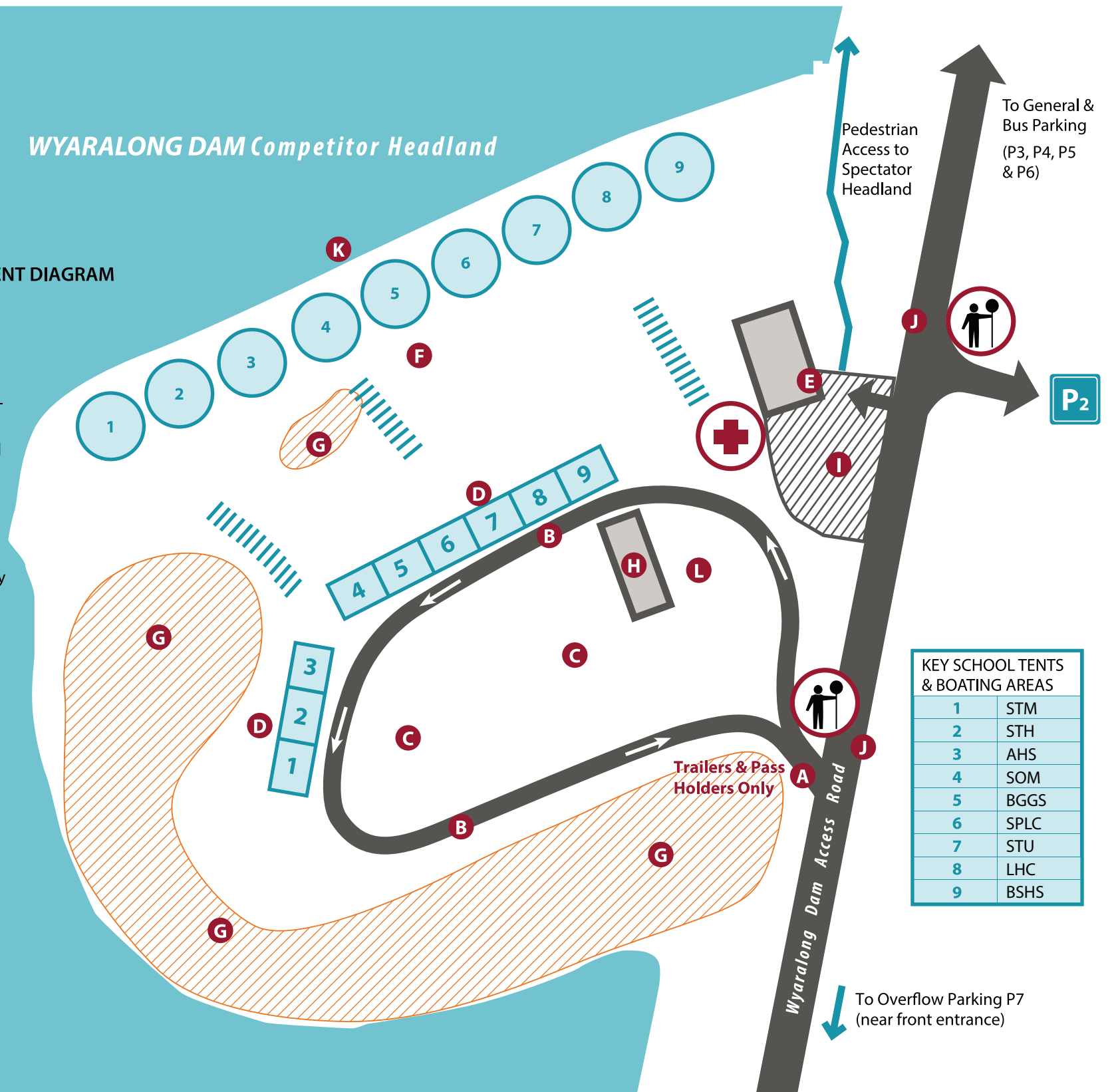
- A** Entry (Restricted Access Only)
- B** One way circulation (anti clockwise)
- C** Trailer Parking Zone
- D** Competitor tents & logistics trailers – 9 zones (Marked on site)
- E** Rowing Queensland Office - First Aid and Bow numbers
- F** Boat Park – 9 zones (Marked on site)
- G** Out of Bounds
- H** Amenities (Toilets & Water station)
- I** Officials and Emergency parking only
- J** Traffic Control
- K** Boating Area (Launch Access)
- L** Catering & Host School parking
- +** First Aid



No dogs allowed at Wyaralong Dam

ABSOLUTELY NO PARENTS' VEHICLES ALLOWED ON THE COMPETITOR HEADLAND UNDER ANY CIRCUMSTANCES

NORTH



| KEY SCHOOL TENTS & BOATING AREAS | |
|----------------------------------|------|
| 1 | STM |
| 2 | STH |
| 3 | AHS |
| 4 | SOM |
| 5 | BGGS |
| 6 | SPLC |
| 7 | STU |
| 8 | LHC |
| 9 | BSHS |

Wyaralong Dam Access Road

Trailers & Pass Holders Only

Pedestrian Access to Spectator Headland

To General & Bus Parking (P3, P4, P5 & P6)

To Overflow Parking P7 (near front entrance)